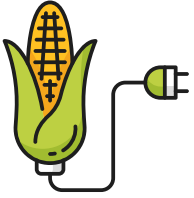


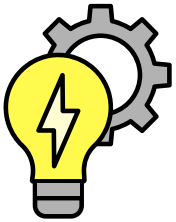
Visual Word Wall



biomass: plant materials and animal waste used as a source of fuel



biodiversity: the variety of life found in a place on Earth



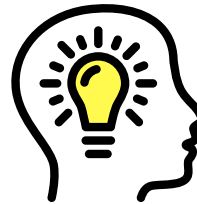
energy: the ability to do work



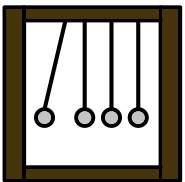
fertilizer: a substance used to improve the growth and health of plants



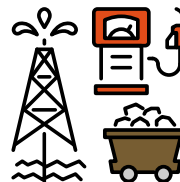
fossil fuel: a fuel formed in the earth from plant or animal remains.



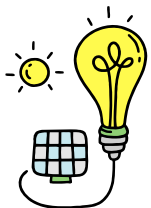
generate: to create or bring into existence



kinetic energy: energy that an object has because of its motion.



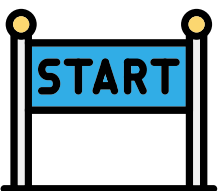
non-renewable energy: an energy source that has not replenished in the time humans have existed



renewable energy: an energy source that is replenished naturally all the time



replenish: to fill something up again



source: the starting point of something

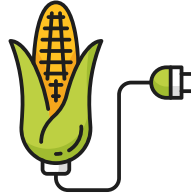


law of conservation of energy: energy cannot be created or destroyed but can only be transformed from one form to another

Visual Word Wall



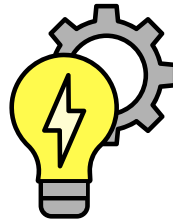
biodiversity



biomass



fertilizer



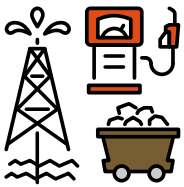
energy



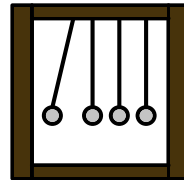
generate



fossil fuel



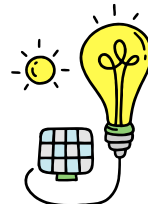
**non-renewable
energy**



**kinetic
energy**



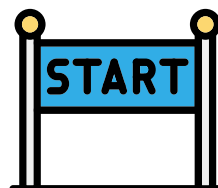
replenish



**renewable
energy**



**law of conservation
of energy**



source