

Bonus activity

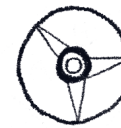
HOW TO DRAW A SATELLITE



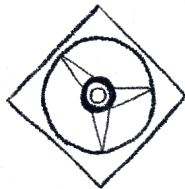
1. Draw a circle in the middle of your paper. Don't make it too big!



2. In the centre of your circle, draw three more, one inside the other. Colour in the outside circle.



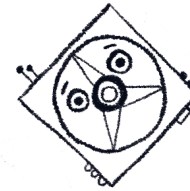
3. Draw three triangle shapes, evenly spaced around this inner circle. Make the triangles quite narrow and the point of each should reach your outer circle (the first one you drew).



4. Draw a diamond shape around your circle and keep the point of the diamond at the very top and centre of your picture.



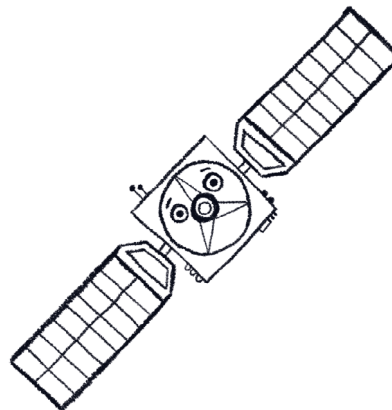
5. On either side of the top triangle, draw two small circles, each with a black dot inside. These are our satellite's eyes. Add a little dash for the 'brows'.



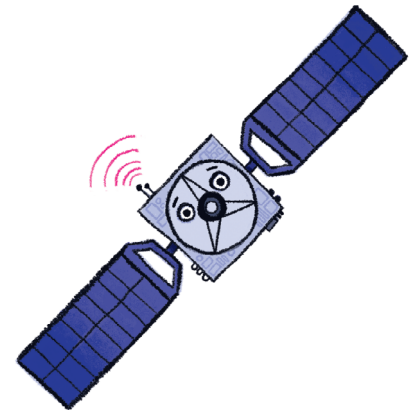
6. Around the box, draw some buttons and controls like the ones in the picture. Don't forget the two antennae at the top!



7. Add two short lines on each side, and then copy the funny half-hexagon shapes I've drawn. They're similar in shape to a roof (with another, smaller roof inside!).



8. Now draw your satellite's 'wings'. Draw two rectangles, each with a line down the centre and lots of lines running across, to make grids.



9. Colour in using any colours you like. Add more controls and finish off by giving your satellite a signal (a few arch shapes emitting from the antenna).