

# Bonus activity

## HOW TO DRAW A MITE



1. In the centre of your page, draw an oval shape, leaving a small gap at the bottom.



2. In this gap, draw two sharp 'teeth' shapes pointing downwards, as shown.



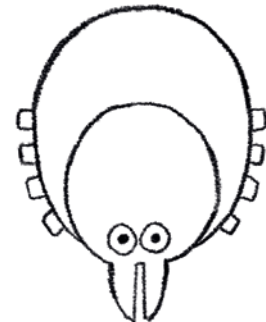
3. Draw two small circles just above these pointed shapes.



4. Add two black dots inside each of the circles. Look! Our mite is awake!



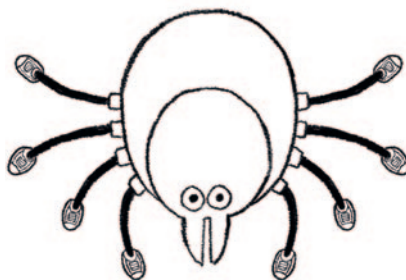
5. Draw a new, bigger oval shape all the way around our original one.



6. On the lower half of your new oval shape, draw four small squares on each side.



7. Out of each of these little squares, draw a nice, thick line. The two at the top should be longer than the two at the bottom. These are the mite's legs.



8. Our mite's feet are cold! Design some mite-sized shoes for all eight of their feet.



9. Time to colour. Artist's tip: Leave two white circles on the body, one larger than the other. This makes it look like our mite's body is shiny!